

State of Wyoming Corner Record

(In compliance with the *CORNER PERPETUATION AND FILING ACT*, Wyoming Statutes, 1997, Section 33-29-140, et. seq., and the Rules and Regulations of the Board of Registration for Professional Engineers and Professional Land Surveyors)

Reverse side of this form may be used if more space is needed.

Record of original survey and citation of source of historical information (if corner is lost or obliterated). Description of corner monumentation evidence found and/or monument and accessories established to perpetuate the location of this corner. Sketch of relative location of monument, accessories, and reference points with course and distance to adjacent corner(s) (if determined in this survey). Method and rationale for reestablishment of lost or obliterated corner.

G.L.O. Record: U.S. Deputy Surveyor, Edward D. Bright, September 27, 1868; Set Boulder 14 x 9 x 6 for cor to secs 3,4,9 & 10.

Found: A well set marked 16" x 6" x 3" granite type stone with 5 notches on the south edge and 2 on the east edge in the receded water level of Polaris Reservoir.

Set: 2 1/2" x 30" aluminum pipe, 26" in the ground with 3 1/4" aluminum cap marked as noted below. Raised a mound of stone north of the corner. Set a 1" x 1" x 2" orange fluorescent colored magnetic reference module in the bottom of the monument hole. Also set a 2 1/2" x 30" aluminum pipe, 27" in the ground as a witness on the section line 1000' west. The witness corner was set for use as a reference to the corner position in the event Polaris Reservoir was filled to a water level above the Section Corner thus making the recovery of the Section Corner difficult.

See back of this sheet for section subdivision detail.

Aluminum Cap Markings

T12N R67W

S4	S3
S9	S10

1999

P.L.S. 2927

LARAMIE COUNTY CLERK
CHEYENNE, WY.

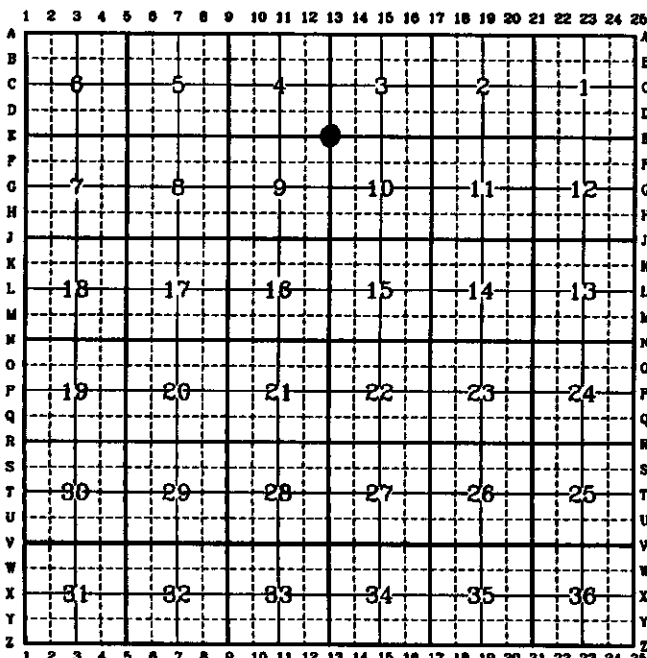
1999 JUN 21 AM 9:06

254555

Date of Field Work: Jan. 5, 1999

Office Reference: A.V.I. Job No. 2085C

CROSS INDEX DIAGRAM



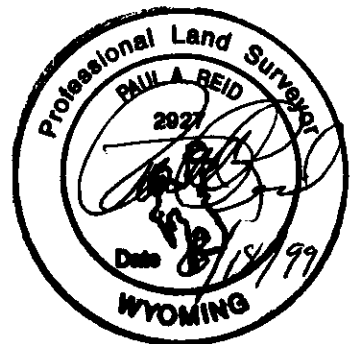
Firm/Agency, Address

Paul A. Reid, P.L.S.
A.V.I., p.c.
2035 Westland Road
Cheyenne, WY 82001

Telephone Number:
(307) 637-6017

This corner record was prepared by me or under my direction and supervision.

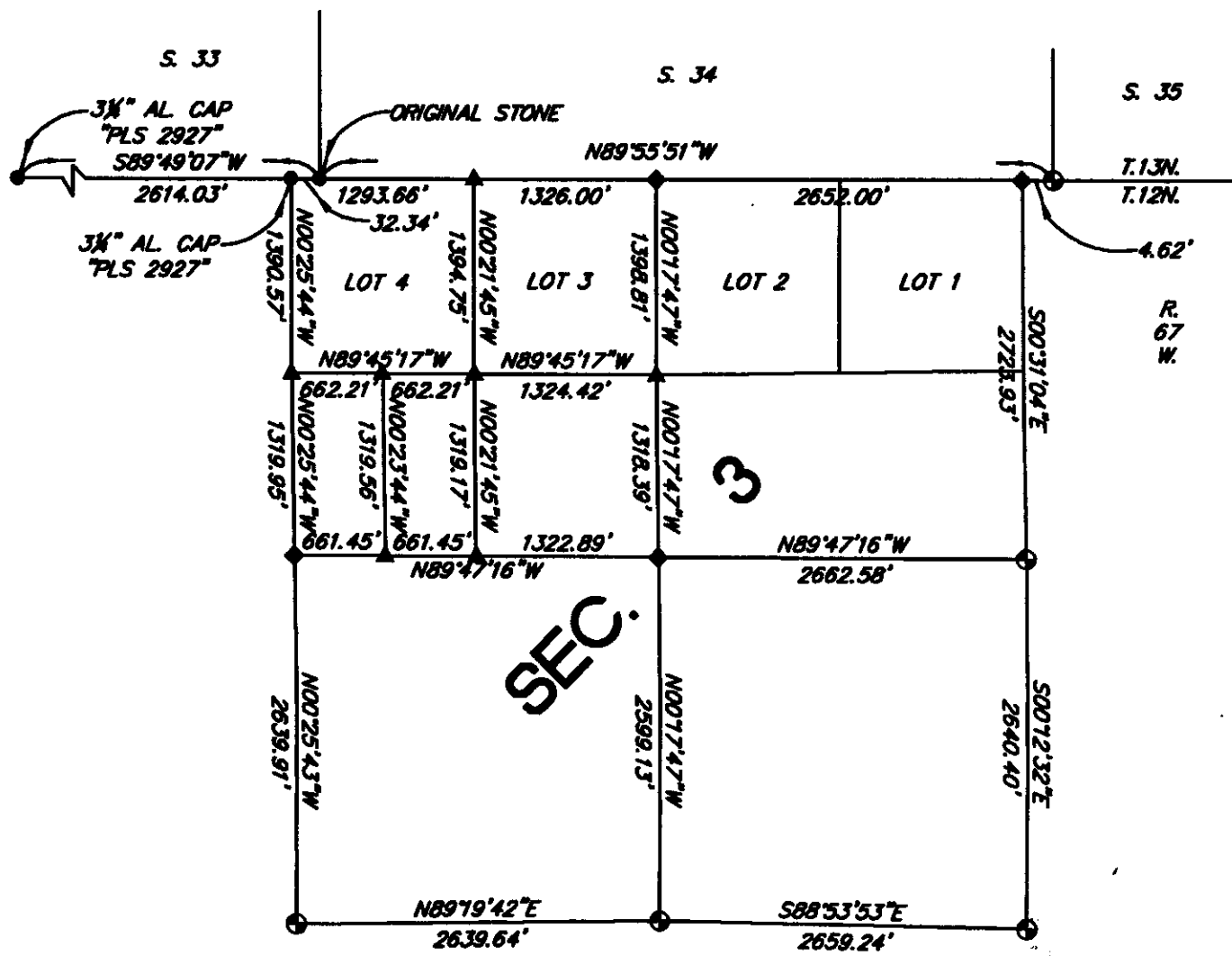
SEAL & SIGNATURE



Corner Name: SW Cor
SBRPEPLS/PLSW: March 1994

Section: 3

T.12N., R.67W.; 6th P.M. Cross-Index No.: E-13



SECTION SUBDIVISION DETAIL
(NOT TO SCALE)

LEGEND

- FOUND MONUMENT AS NOTED
 - ◆ SET 3 1/4" ALUMINUM CAP MARKED "PLS 2927"
 - ▲ SET 2 1/2" ALUMINUM CAP MARKED "PLS 2927"
 - ⊕ FOUND ORIGINAL STONE, RESET 3 1/4" AL. CAP MARKED "PLS 2927"
- BASIS OF BEARINGS: NAD 83 ($\Delta \alpha = 11'06''$ APPROX.)